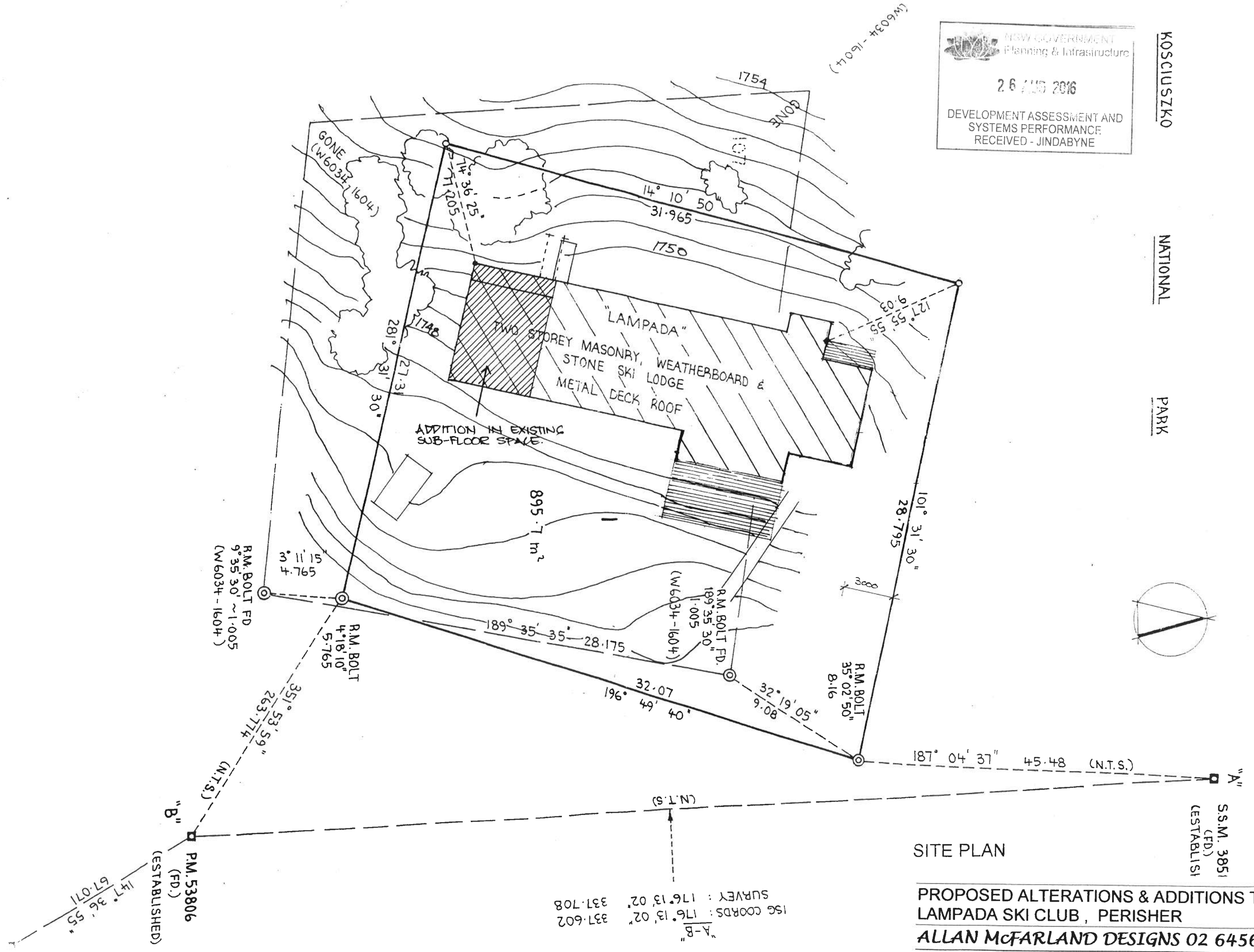
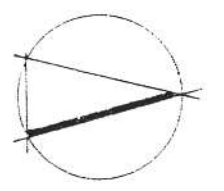


NSW GOVERNMENT
 Planning & Infrastructure
 26 JUL 2016
 DEVELOPMENT ASSESSMENT AND
 SYSTEMS PERFORMANCE
 RECEIVED - JINDABYNE

KOSCIUSZKO

NATIONAL

PARK



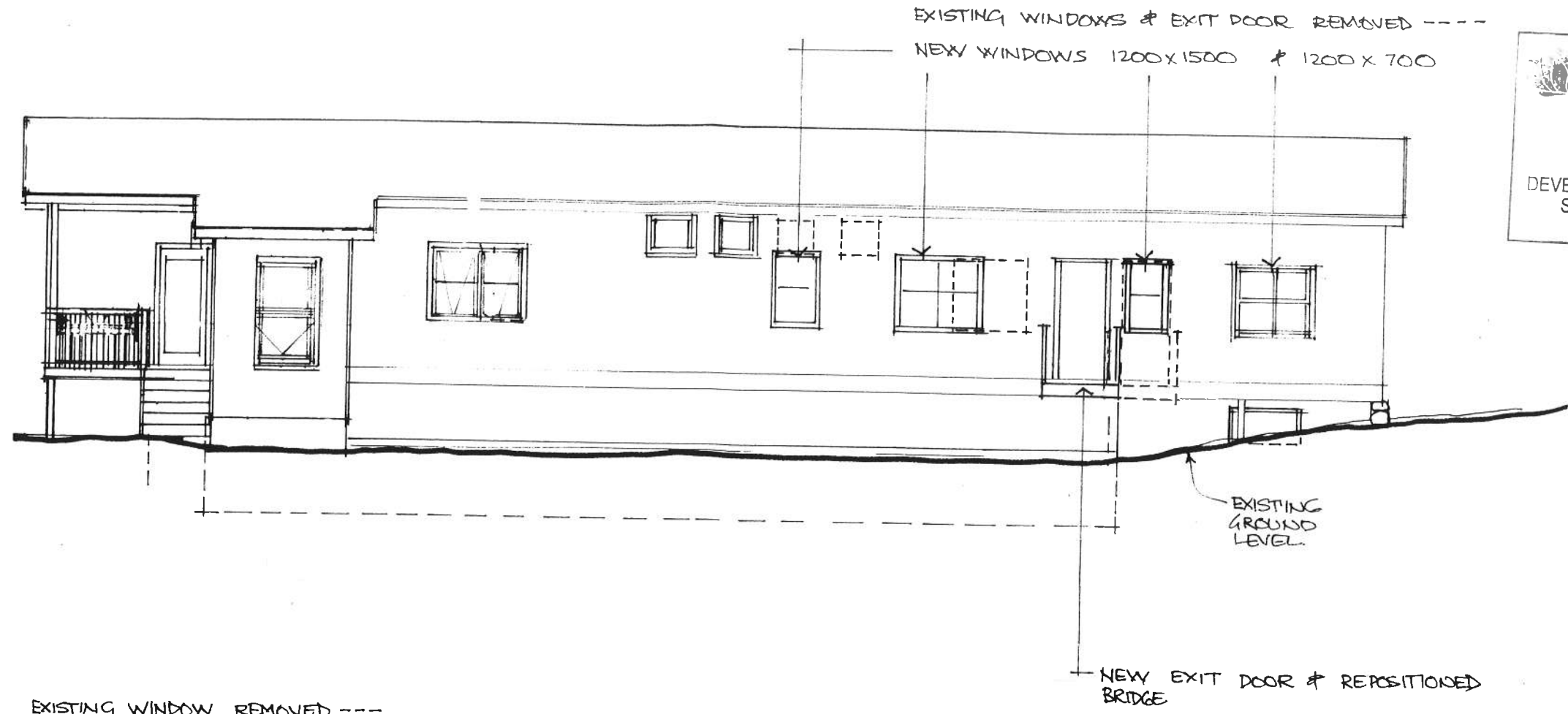
SITE PLAN

PROPOSED ALTERATIONS & ADDITIONS TO
 LAMPADA SKI CLUB, PERISHER
ALLAN McFARLAND DESIGNS 02 64563411
 SCALE 1:200 DATE 07/16 SHEET 1 / 5

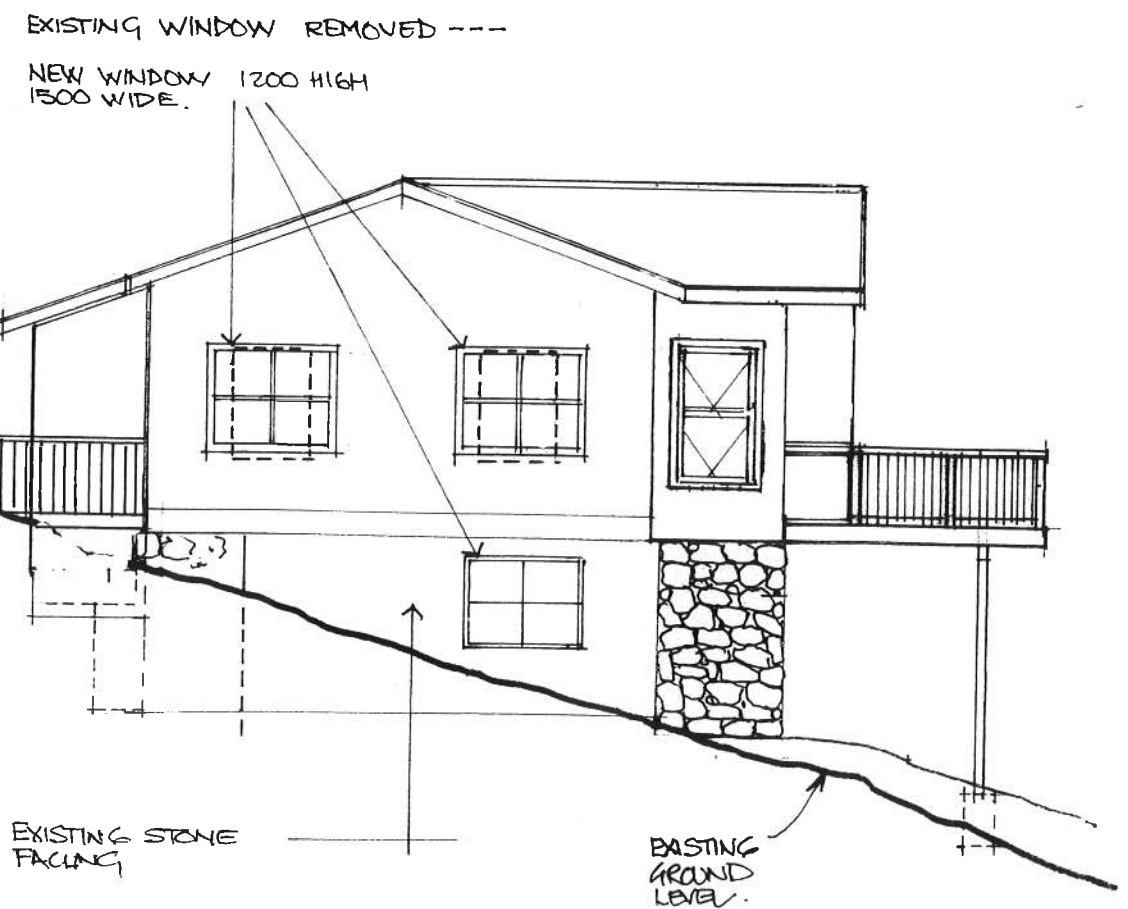
ISG COORDS : 176° 13' 02" 337.602
 SURVEY : 176° 13' 02" 337.708
 "A-B" (N.T.S.)

S.S.M. 3851
 (FD)
 ESTABLISHI

P.M. 53806
 (FD)
 (ESTABLISHED)

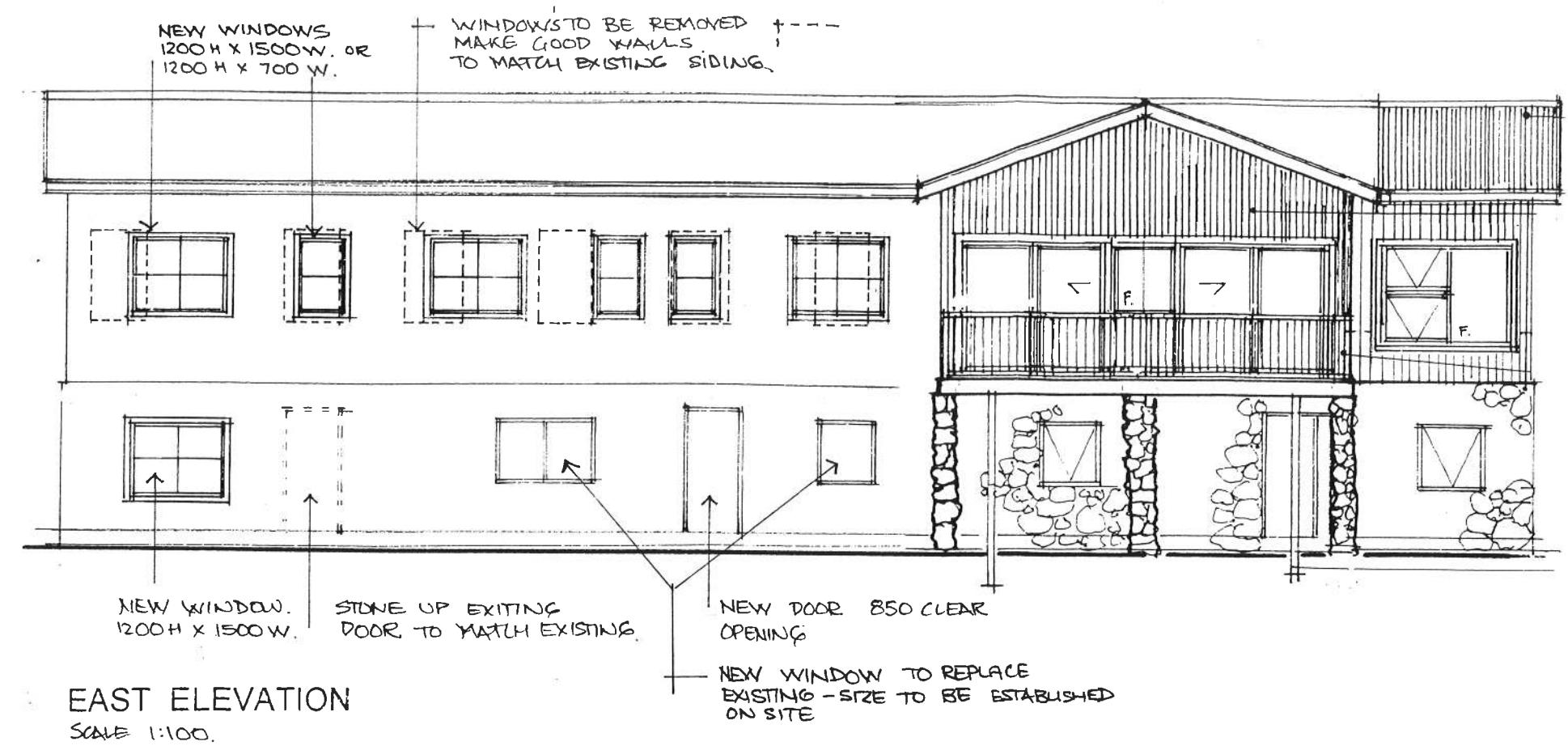


WEST ELEVATION



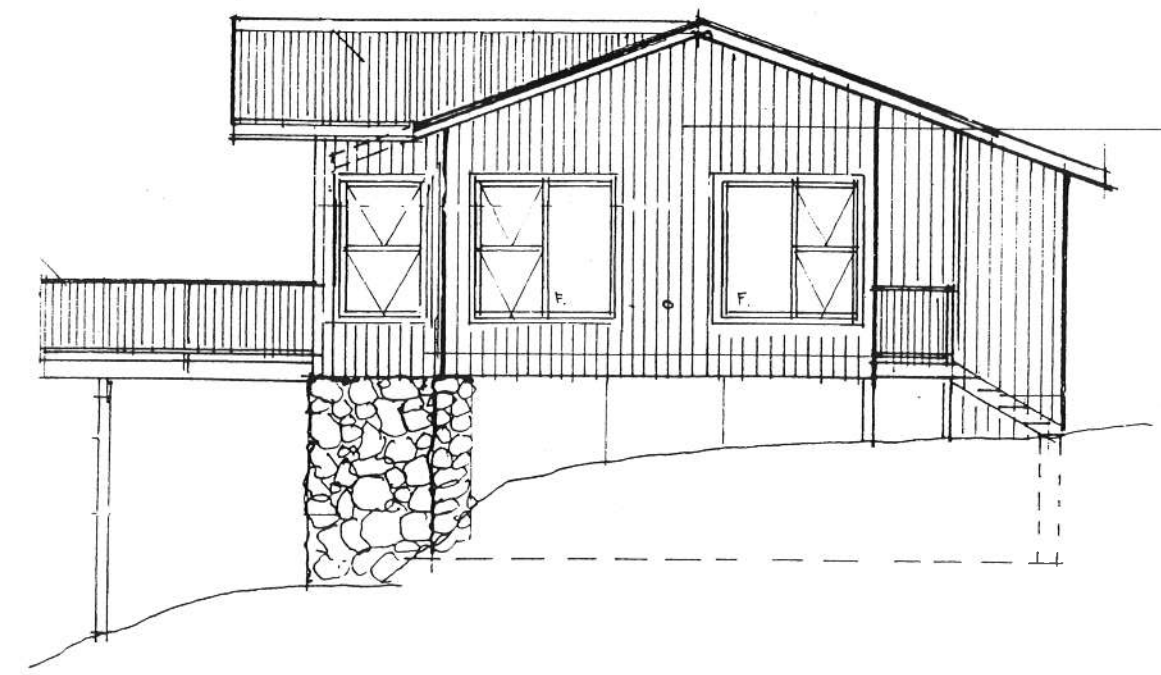
SOUTH ELEVATION

NSW GOVERNMENT
 Planning & Infrastructure
 26 AUG 2016
 DEVELOPMENT ASSESSMENT AND
 SYSTEMS PERFORMANCE
 RECEIVED - JINDABYNE

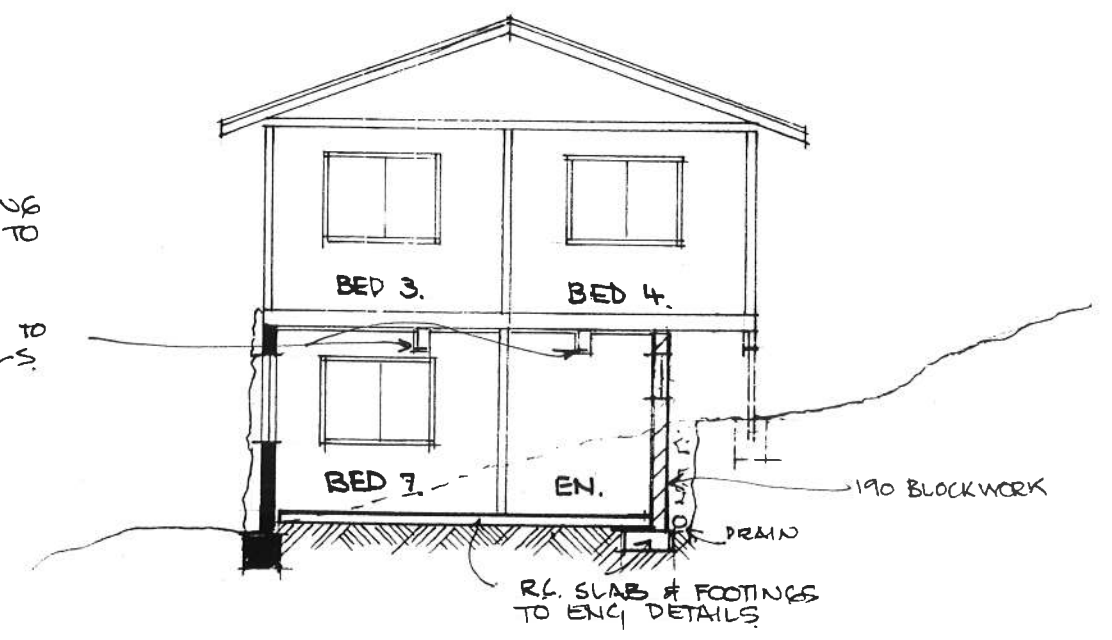


EXISTING SIDING

EAST ELEVATION
 SCALE 1:100.



NORTH ELEVATION



SECTION A-A

PROPOSED ALTERATIONS & ADDITIONS TO LAMPADA SKI CLUB,
 PERISHER
 ALLAN McFARLAND DESIGNS 02 64563411
 SCALE 1:100 1: DATE 07/16 SHEET 5/5